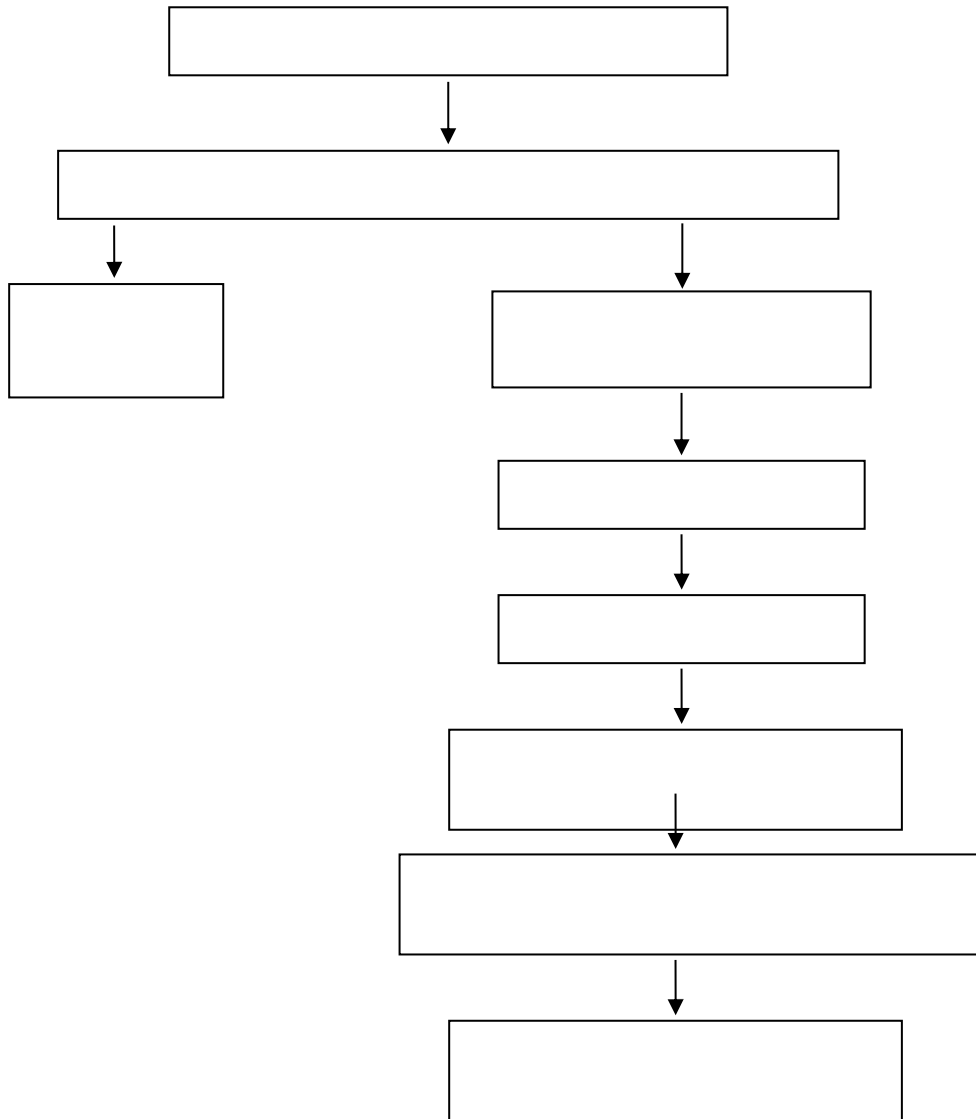


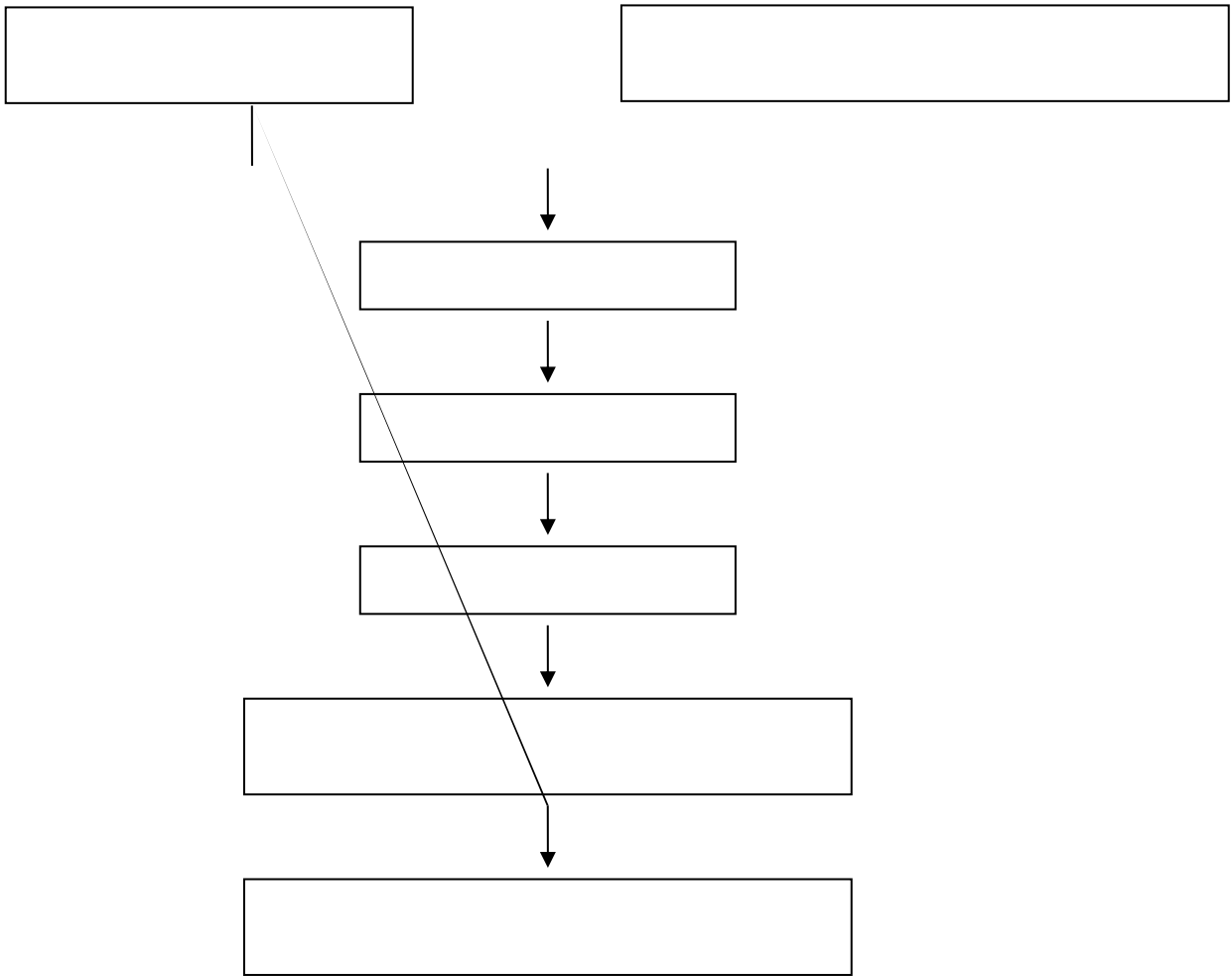
# 目 录

|    |  |  |
|----|--|--|
|    |  |  |
| 1  |  |  |
| 2  |  |  |
| 3  |  |  |
| 4  |  |  |
| 5  |  |  |
| 6  |  |  |
| 7  |  |  |
| 8  |  |  |
| 9  |  |  |
| 10 |  |  |
| 11 |  |  |
| 12 |  |  |
| 13 |  |  |
| 14 |  |  |
| 15 |  |  |
| 16 |  |  |
| 17 |  |  |
| 18 |  |  |
| 19 |  |  |
| 20 |  |  |
| 21 |  |  |
| 22 |  |  |
| 23 |  |  |
| 24 |  |  |
| 25 |  |  |
| 26 |  |  |
| 27 |  |  |
| 28 |  |  |
| 29 |  |  |
| 30 |  |  |

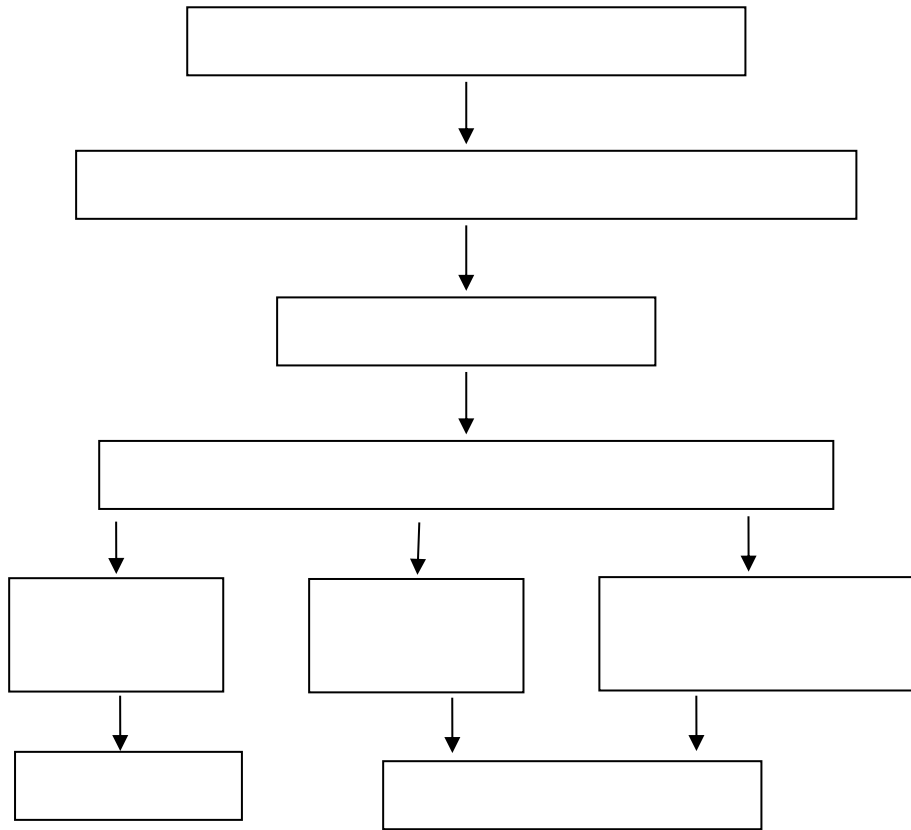
# 学生转专业管理流程



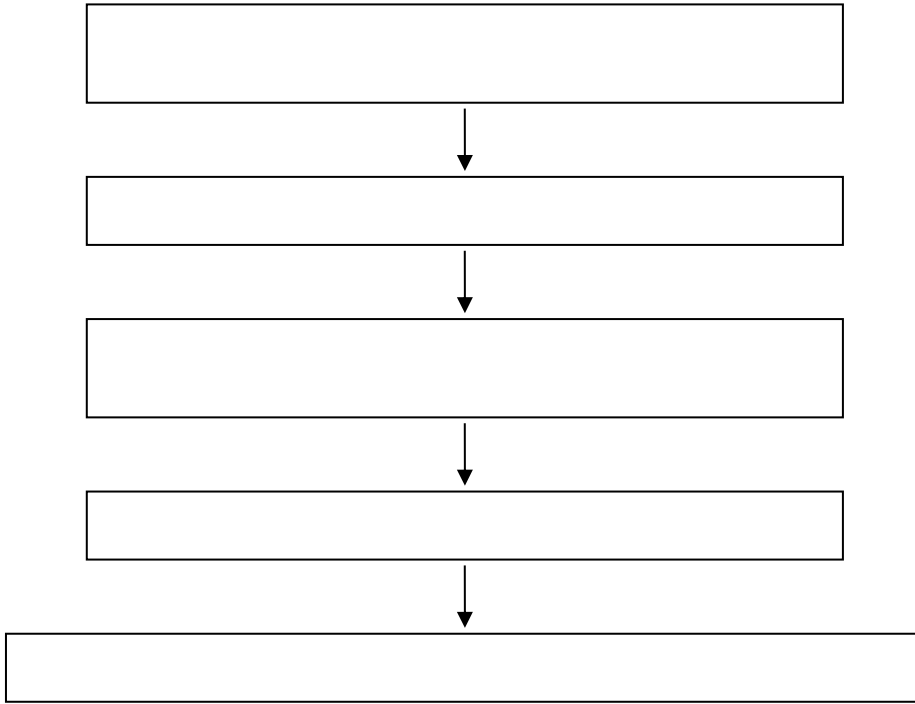
# 学生退学管理流程图



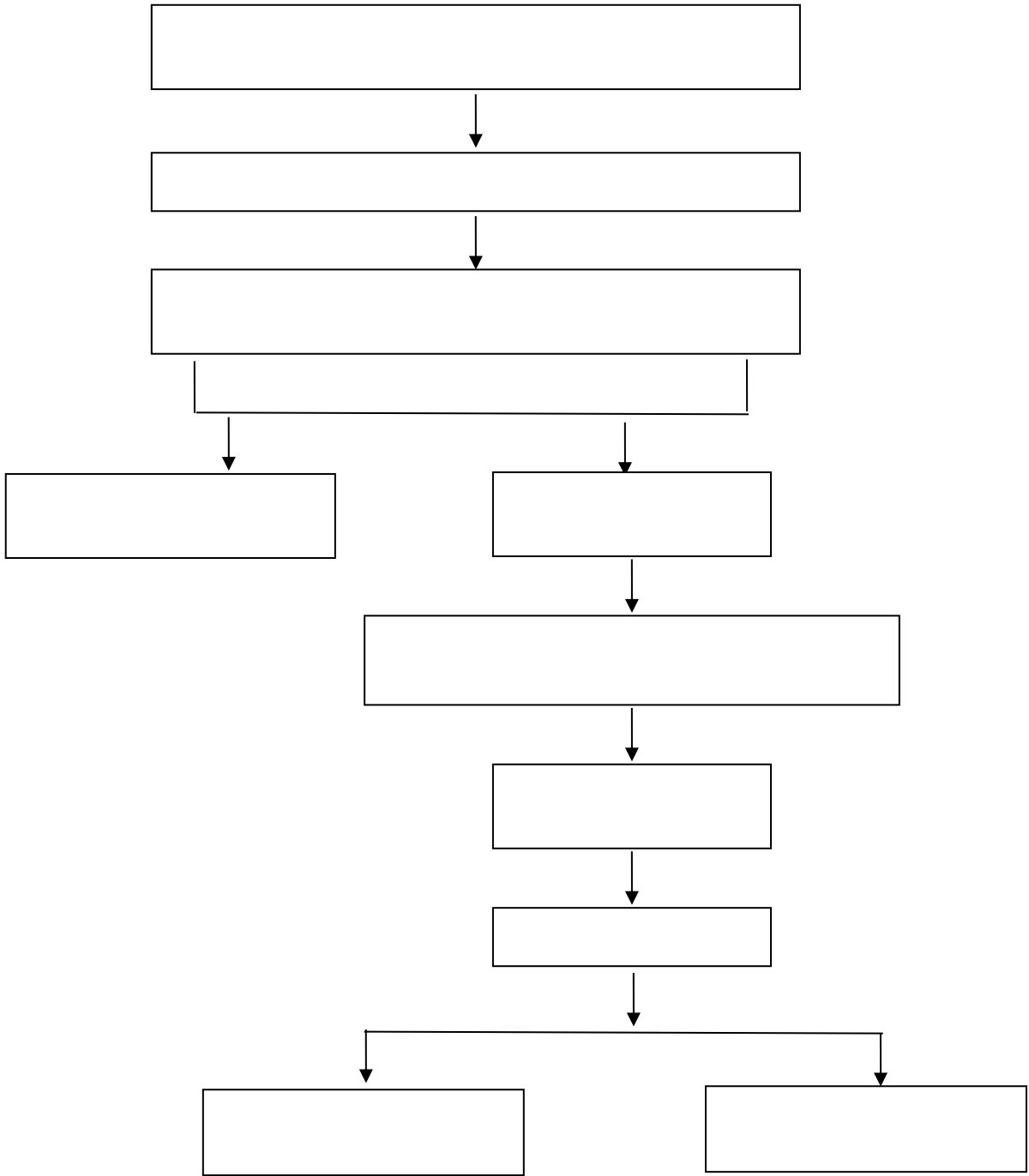
## 学生休学、保留学籍、复学、重新编级流程



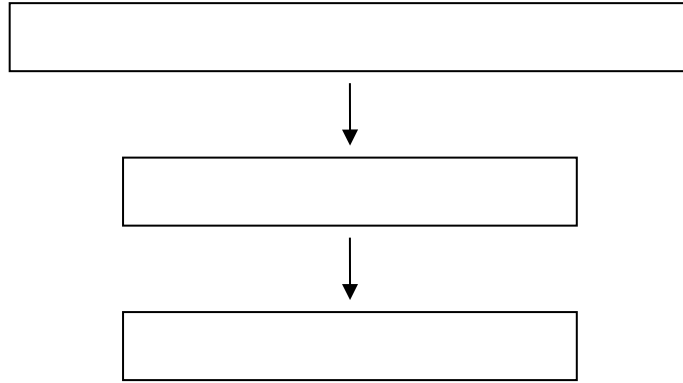
## 学生课程重新学习管理流程



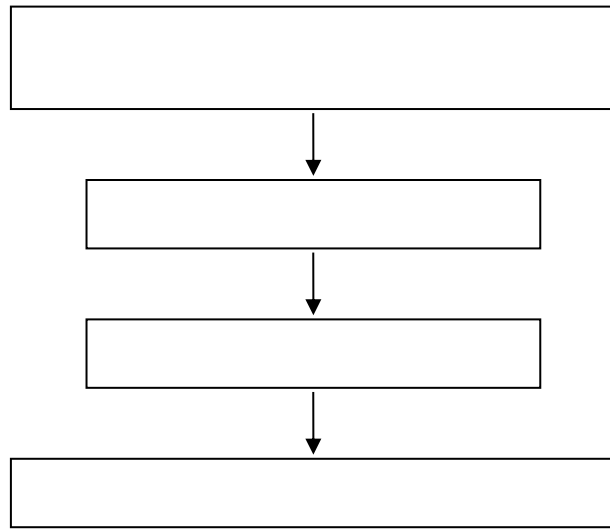
# 成绩管理流程



## 学生课程缓考管理流程

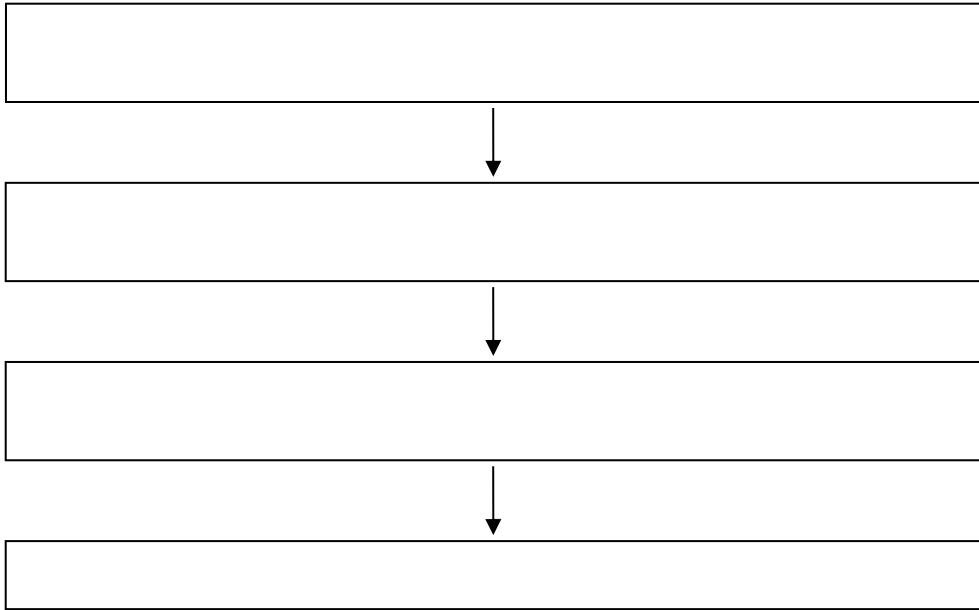


## 交流生学分认定办理流程





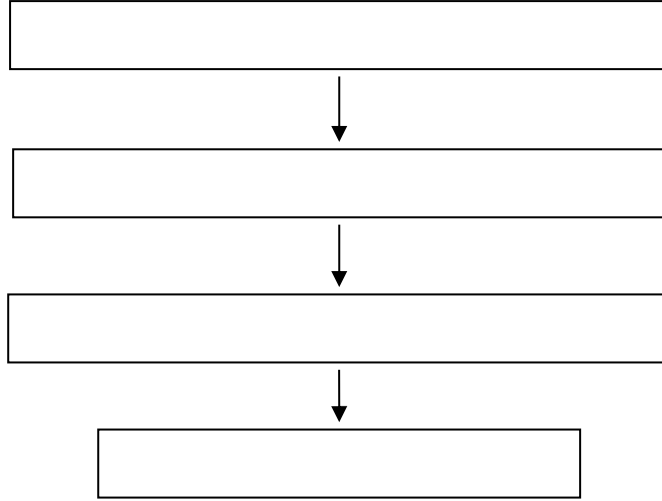
## 学生申请创新学分办理流程



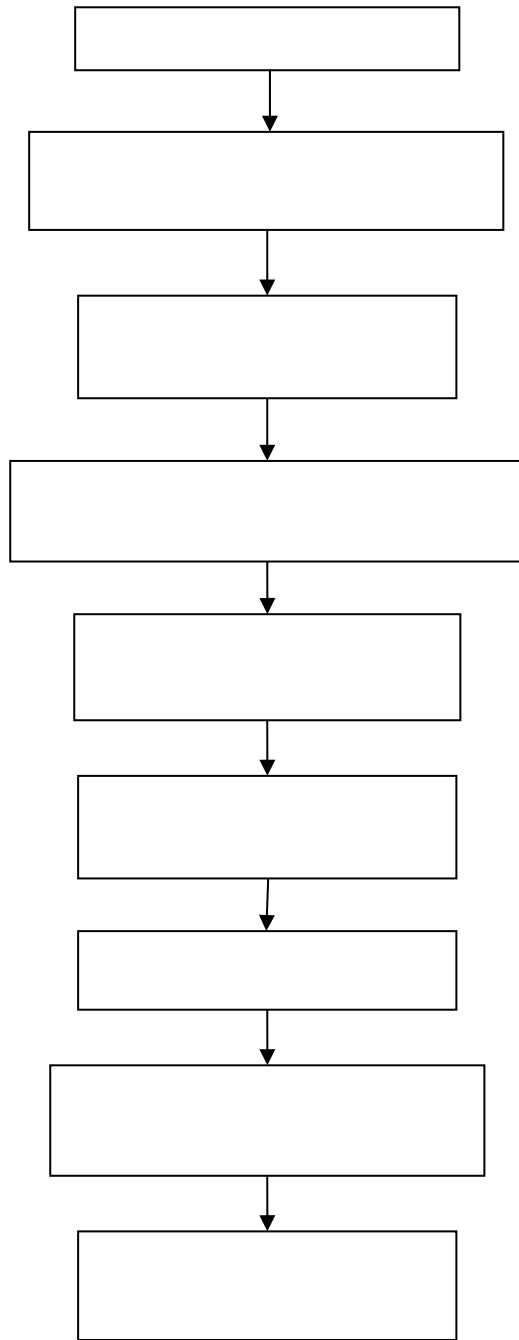




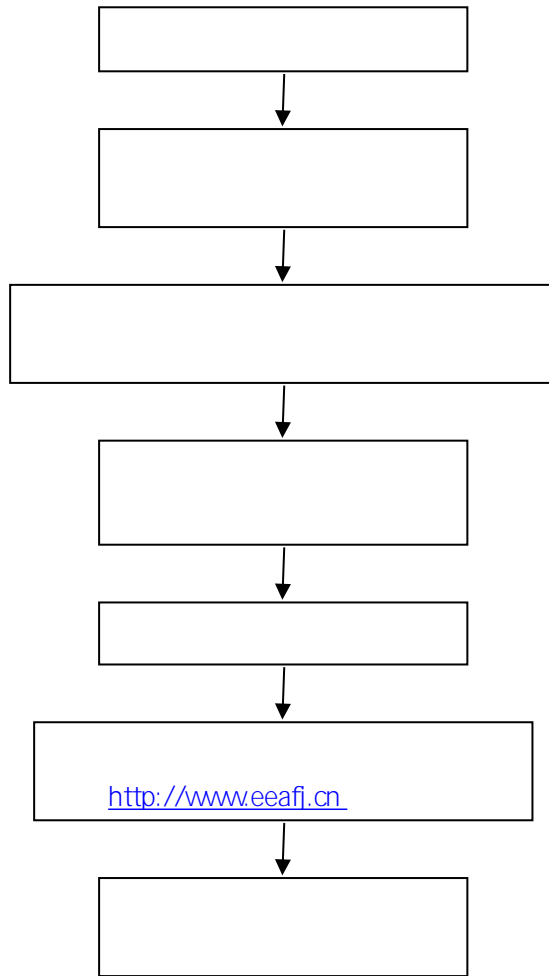
## 公共课程试卷送印流程



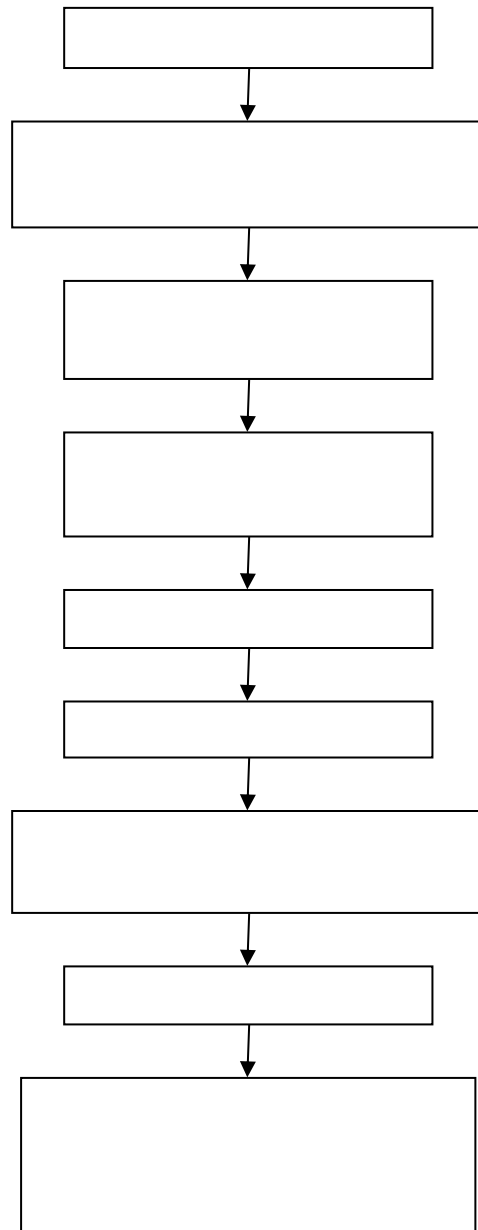
## 大学英语四、六级考试流程



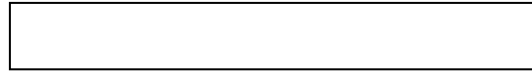
## 全国计算机等级考试流程



## 福建省高校计算机等级考试流程



## 课程表编排流程图





公共选修课报课、选课流程图

时间安排

教师报课

学生选课

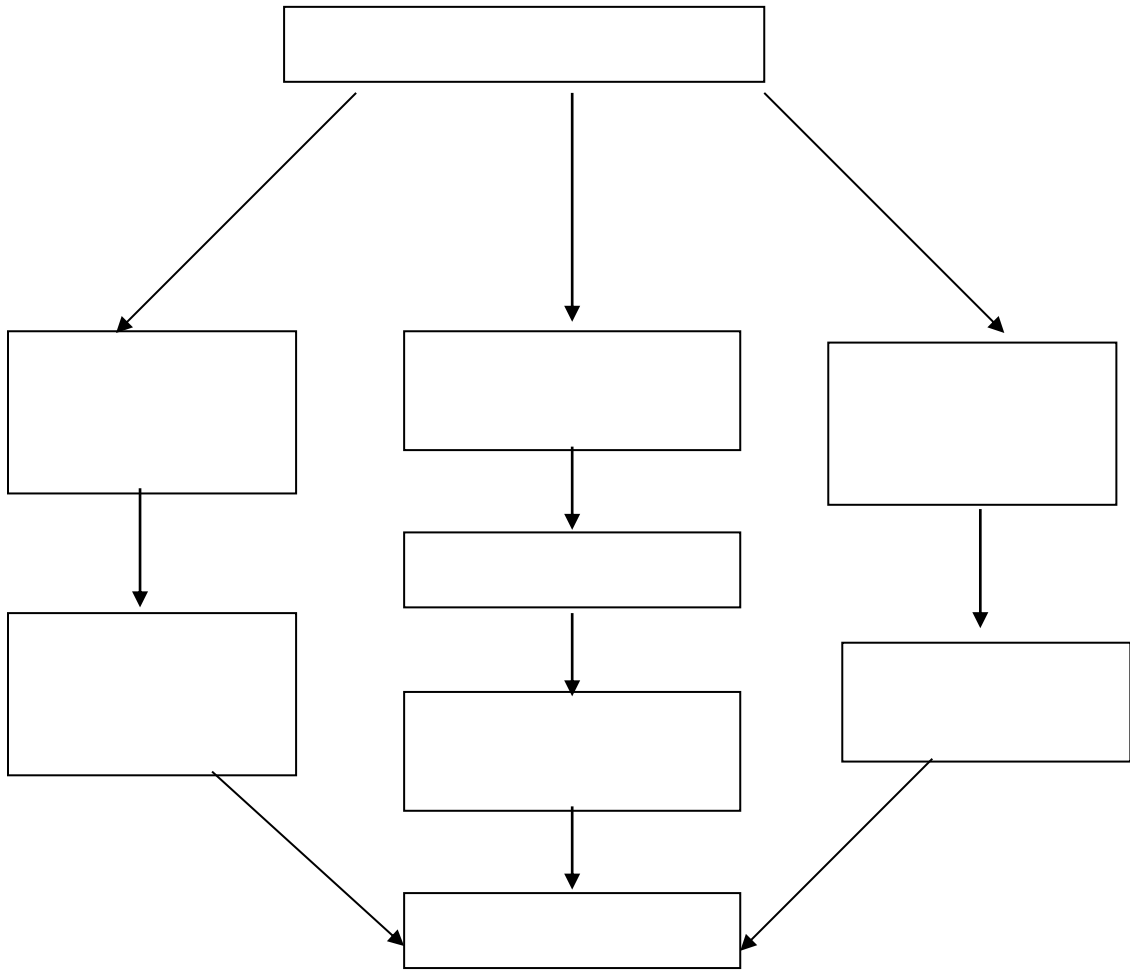
责任单位

10

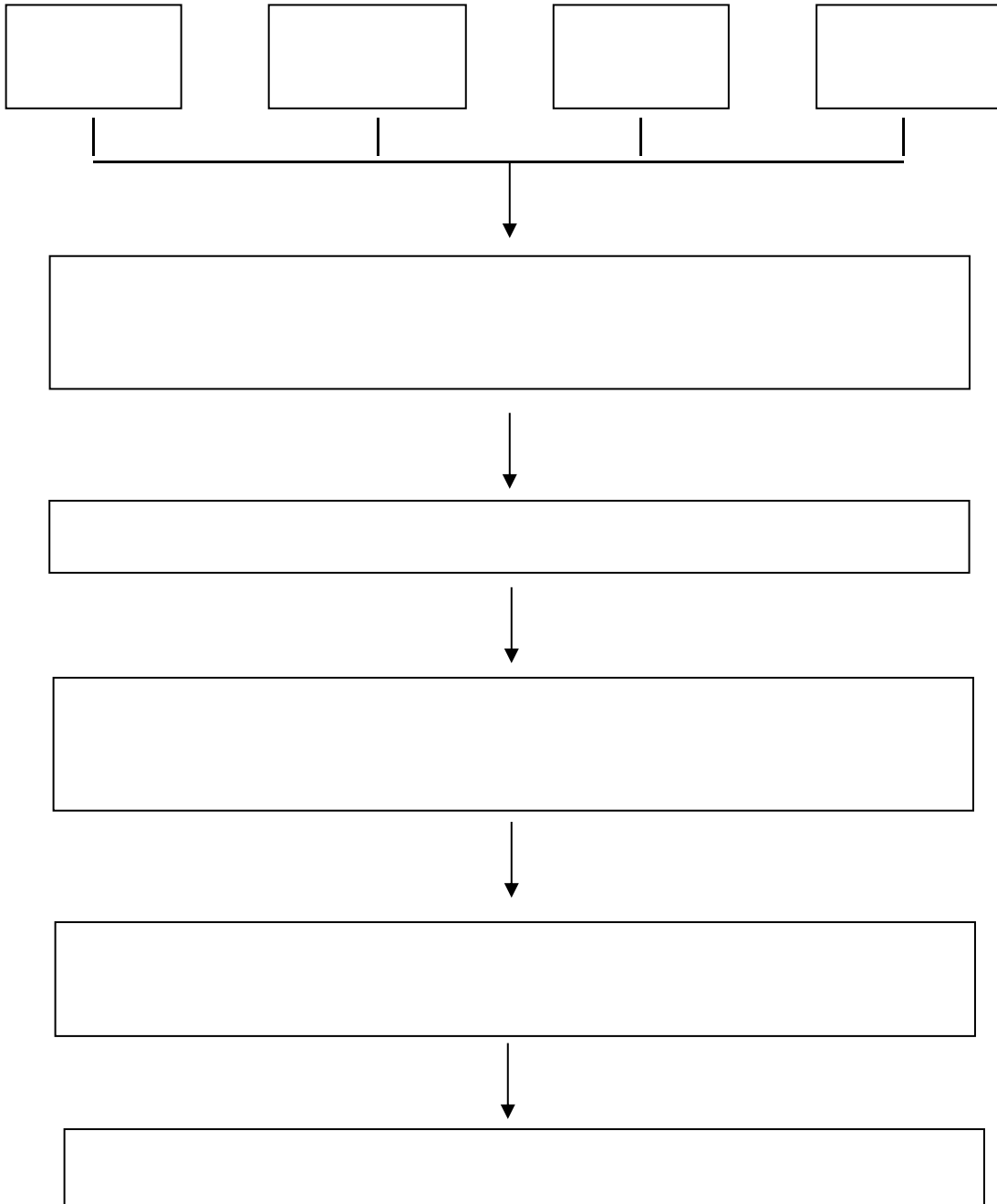
11

12--14

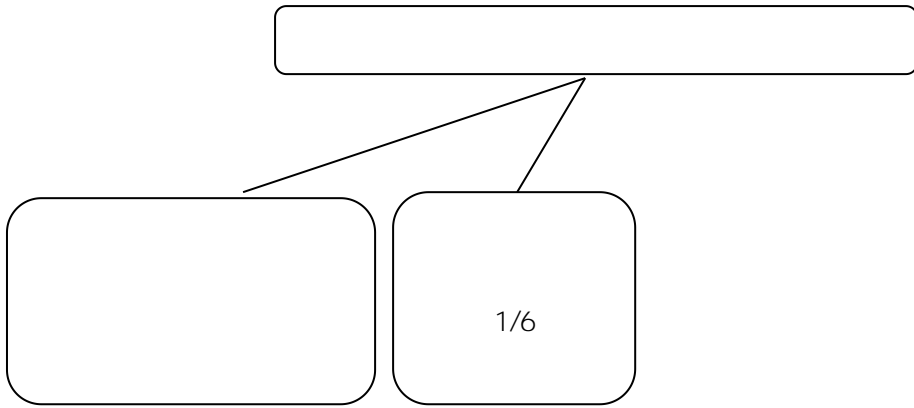
# 教室管理相关流程图



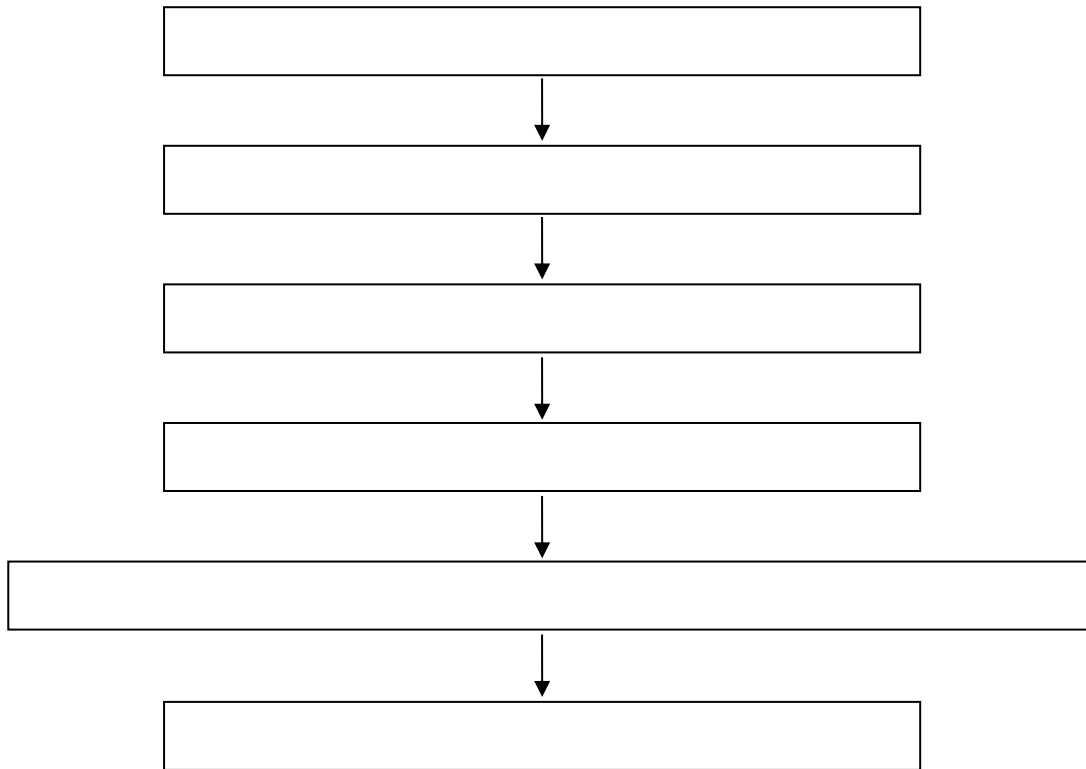
# 教学事故认定与处理流程图



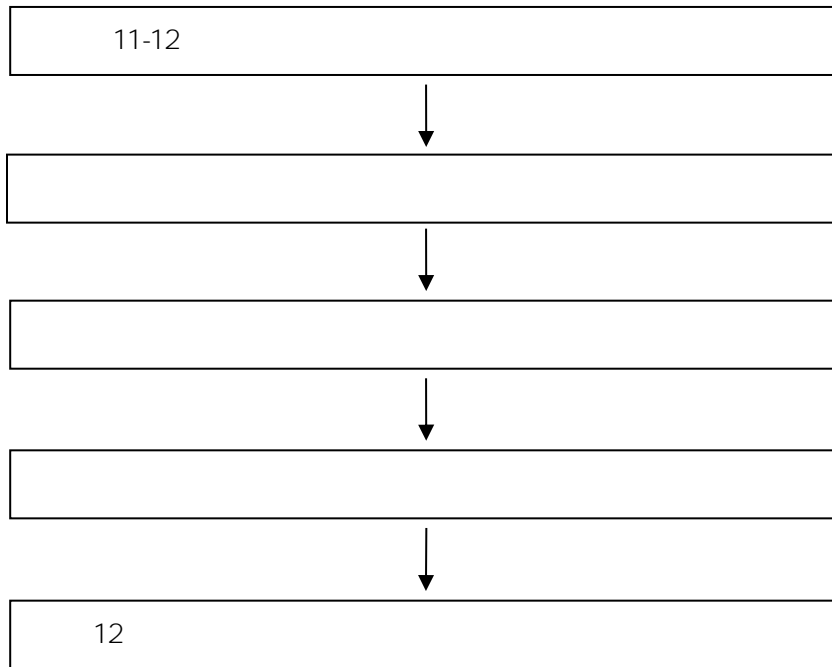
# 普通高等教育学士学位授予流程图



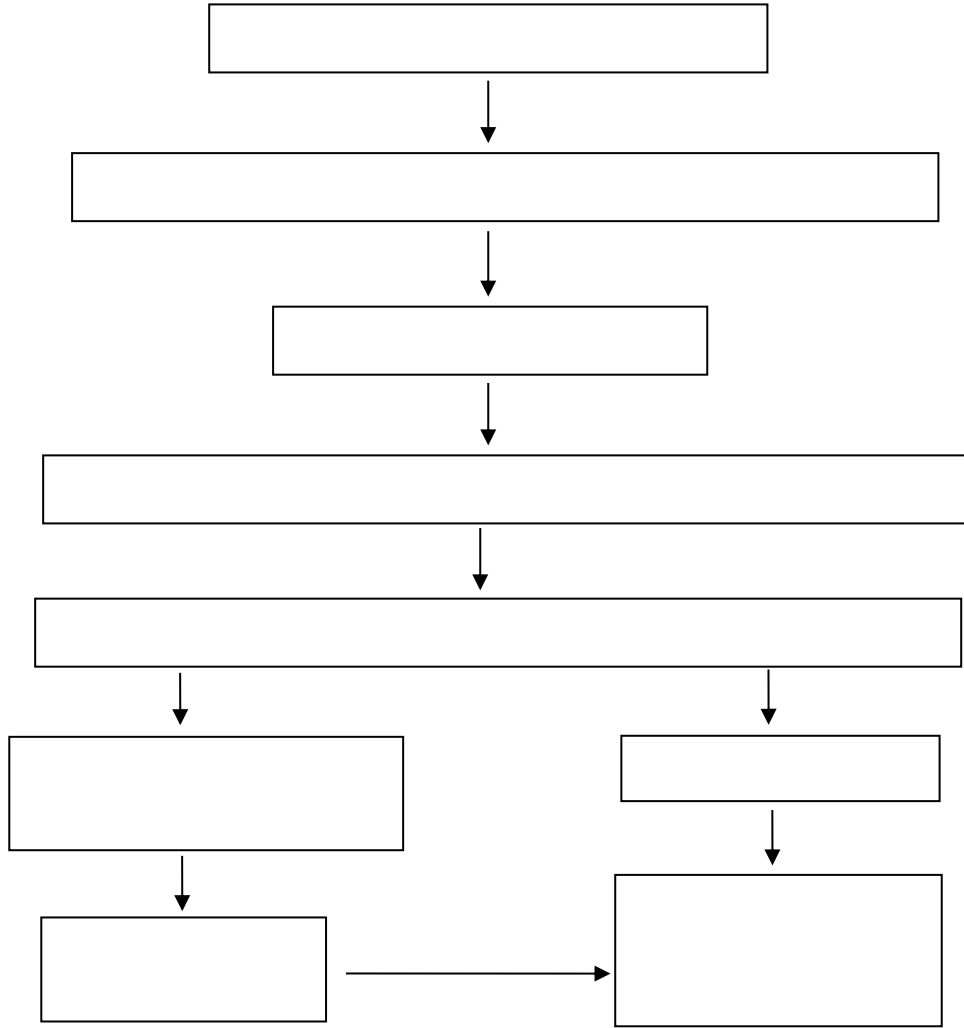
## 交流生面试组织流程



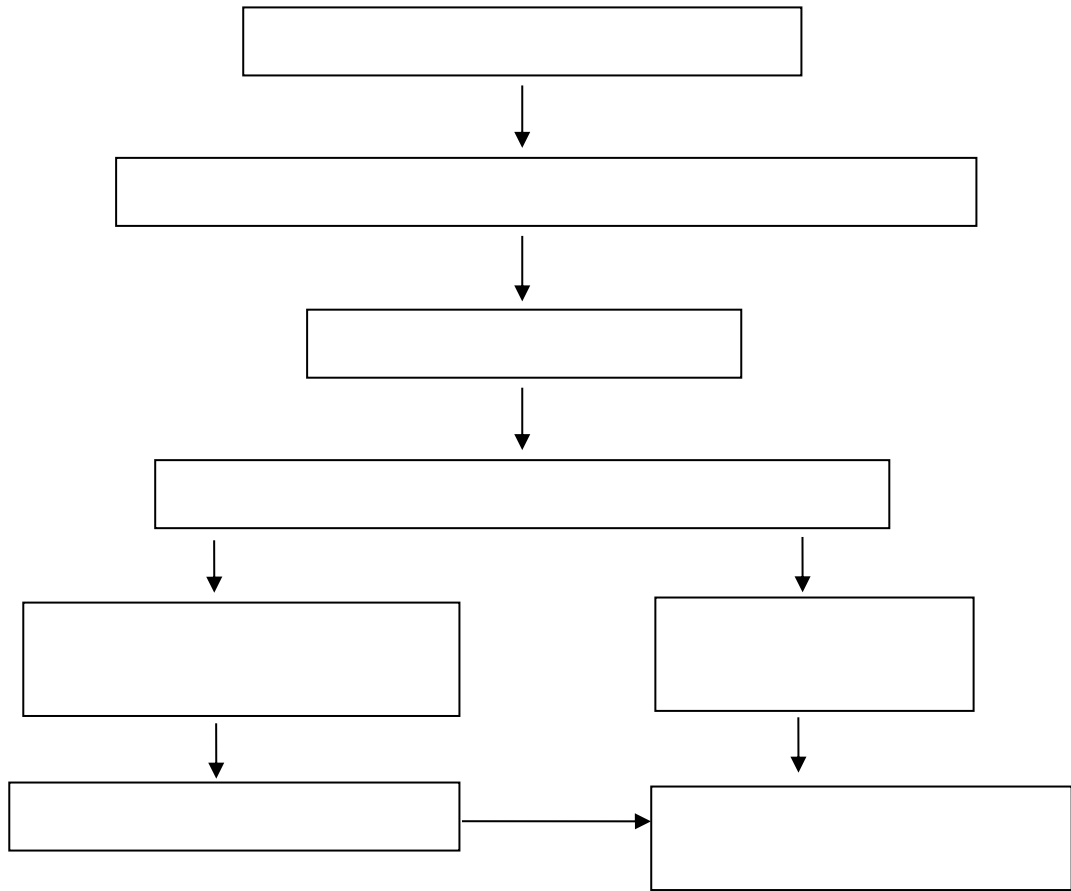
## 学生申请省级及以上学科竞赛奖励流程



# 各类教改项目申报流程

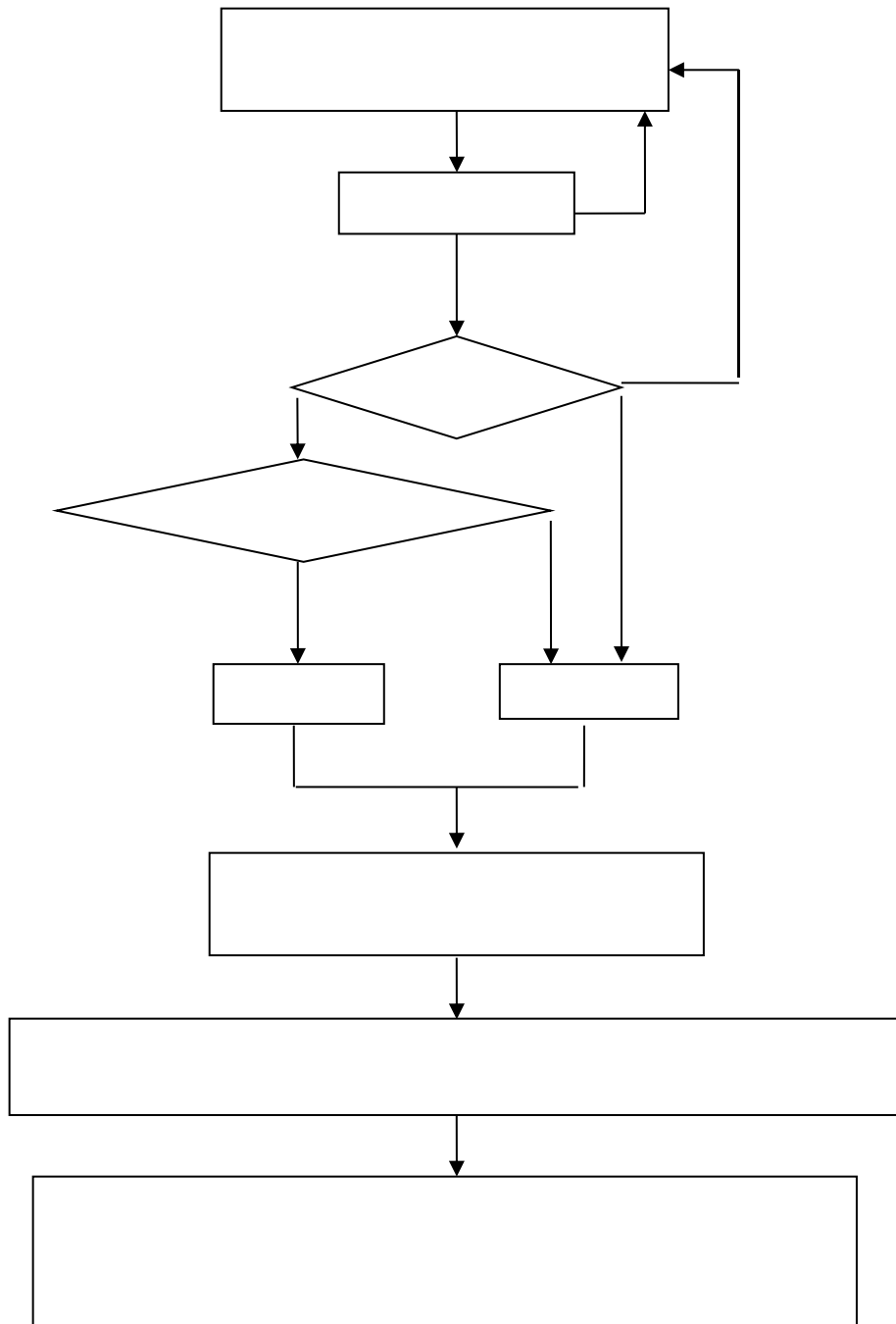


# 教学竞赛活动流程



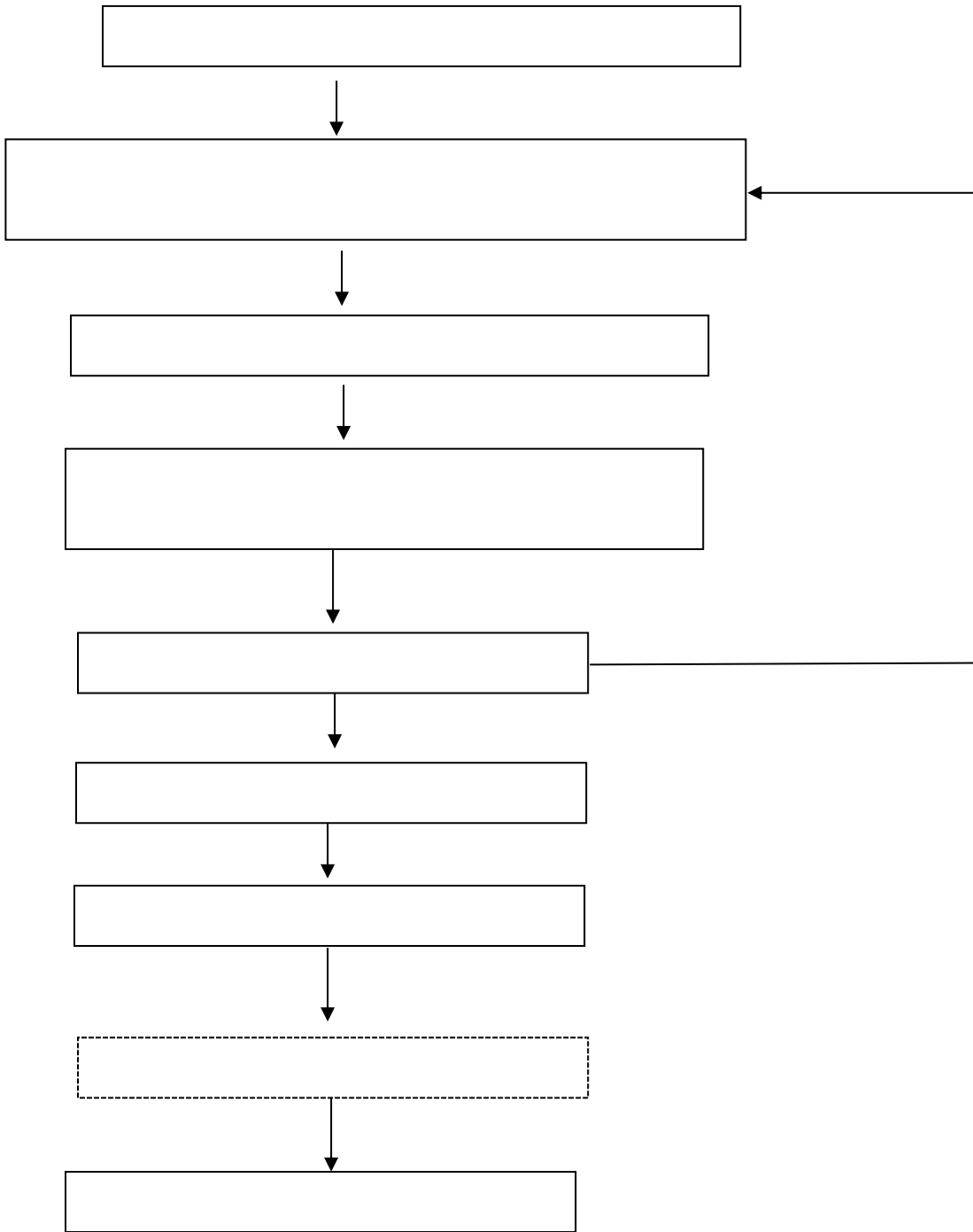


# 大学生创新创业训练计划项目管理流程图

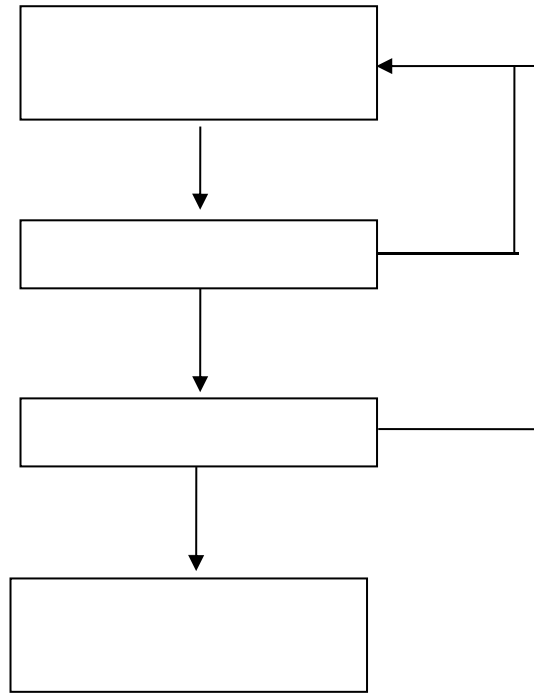




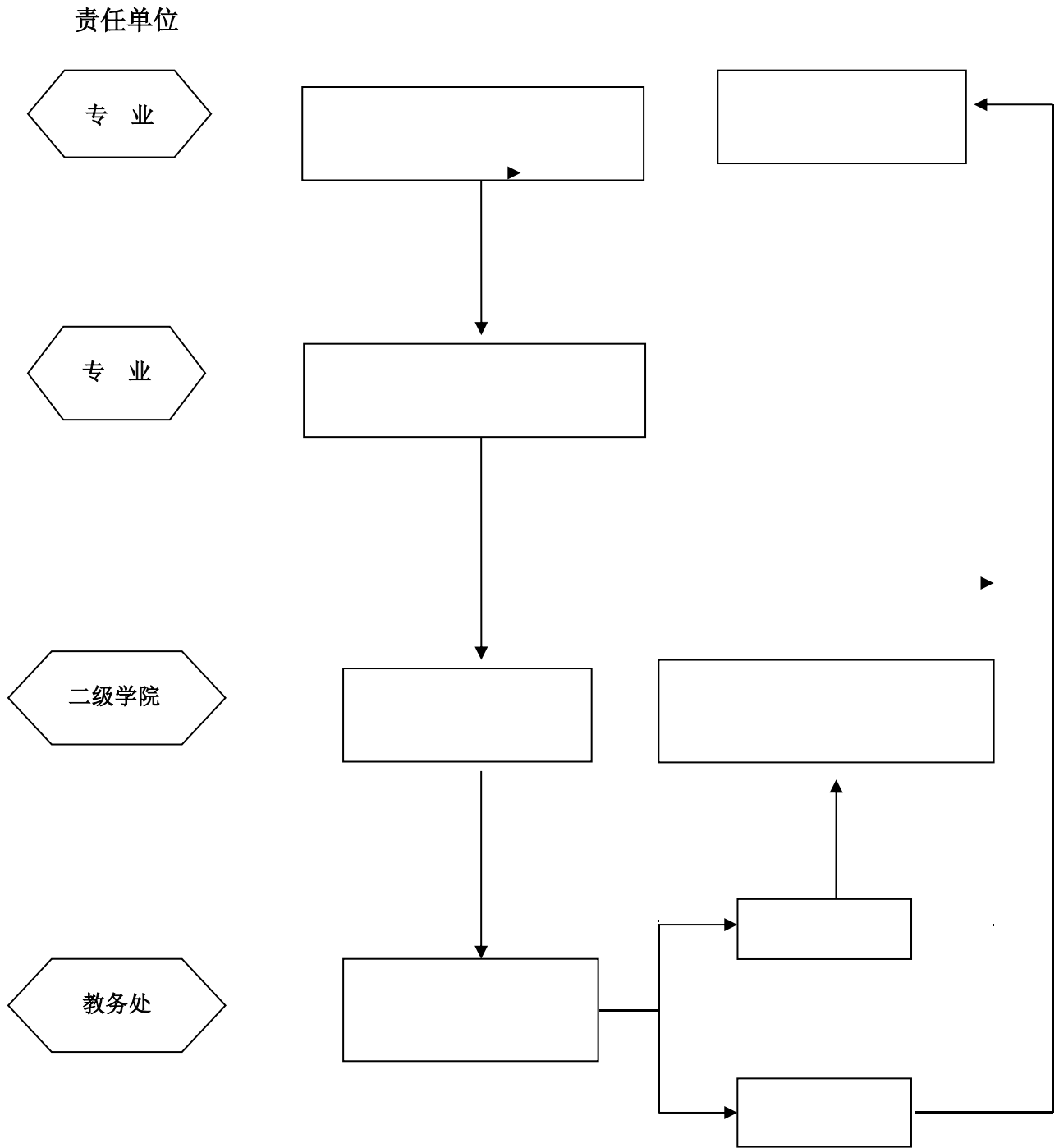
# 教学设备采购项目申报工作流程图



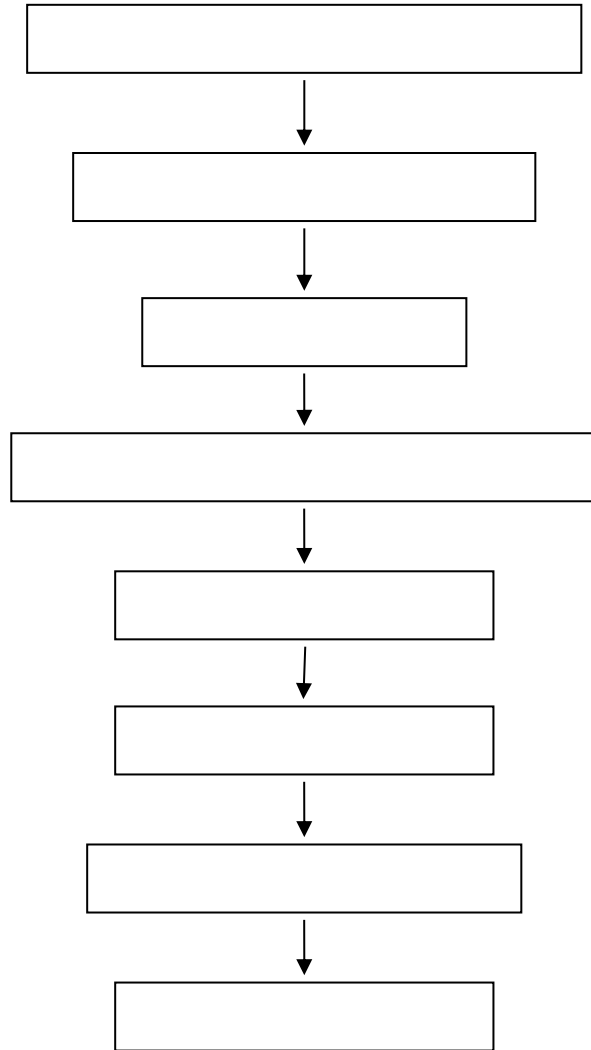
# 教学实验用房调配流程图



# 实践教学基地建设工作流程图



## 教材业务运行工作流程



# 教材采供管理流程图

